



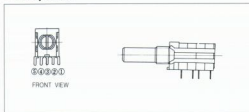
ROTARY SWITCH

(BTSR10H SERIES)

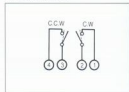
CAT. NO.:BTSR10H-2

Circuit Diagram

• Rotary switch



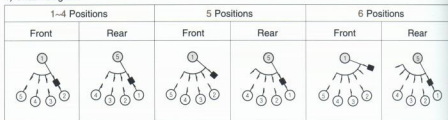
• Pulse Switch



C.W.: ①② ON status during changeover action

C.C.W.: ③④ ON status during changeover action

1) Circuit diagram



2) Pulse No. of pulse switch : 20 pulse

3) Changeover angle : a) rotary switch : $30^\circ \pm 3^\circ$ (2-6 positions)

b) pulse switch : $18^\circ \pm 3^\circ$ (20 endless positions)

Suggested Ordering Code

BTSR10H - 1 5 N - R 2 0

Series

Number of wafer sections

Number of sections	1~3
Code	1-3

Number of positions

Number of positions	2~5	20 Pulse
Code	2-5	P

Shaft length

Shaft length	15	20	25	30	35	40
Code	15	20	25	30	35	40

Shaft style

Shaft style	18-tooth serrated shaft	Round shaft with groove	Flat shaft
Code	S	R	F

Changeover timing

Changeover timing	Shorting	Non-shorting
Code	S	N