

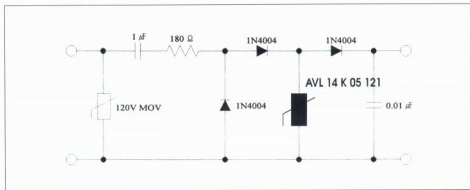
Typical Sensor Protection

Required characteristics of Transient Voltage Suppressors

Rated DC Volt. : Typically > 14V

Energy rating : Typically > 0.4J

Capacitance : No concern



Hall Device Protection

Required characteristics of Transient Voltage Suppressors

Rated DC Volt. : \geq Control voltage

Energy rating : Typically > 0.3J

Capacitance : No concern

